



Customer: Lazarus Adventures LLC

Address: PO Box 2123
Maple Grove, MN 55311

Sample ID: Lot 03122021 Delta 8, 100 mg/ml

Matrix: Tincture

Labnumber: 21C0321-01 Total mass or volume per unit (g or mL): 2.5

Density (g/mL): 1.1052

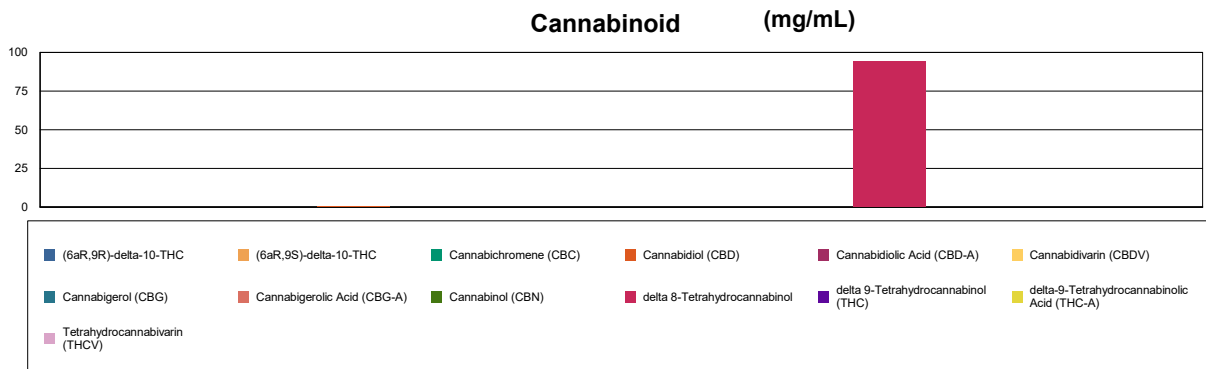
Cannabinoid Profile

Test Conditions: 18°C
Extraction Technician: SH
Analytical Chemist: CB

Extraction Date(s)	Analysis Date(s)
3/16/2021	3/16/2021

Cannabinoids (HPLC)	Results			
	LOD (mg/mL)	%	mg/mL	mg/container
Cannabidiol (CBD)	<0.20	0.02	0.155	0.387
Tetrahydrocannabivarin (THCV)	<0.20			
Cannabinol (CBN)	<0.20			
Cannabichromene (CBC)	<0.20			
delta 9-Tetrahydrocannabinol (THC)	<0.20			
delta-9-Tetrahydrocannabinolic Acid (THC-A)	<0.20			
delta 8-Tetrahydrocannabinol		9.40	94.0	235
(6aR,9S)-delta-10-THC	<0.20			
(6aR,9R)-delta-10-THC	<0.20			
Cannabinoids Total		%	mg/mL	
Max Active THC (delta-9-tetrahydrocannabinol)		0.00	0.00	
Max Active CBD		0.02	0.16	
T.Active Cannabinoids		0.02	0.16	
Total Cannabinoids		9.42	94.20	

Following USDA guidelines on uncertainty, Altitude Consulting's uncertainty is calculated to be +/- 2% for all cannabinoids using a coverage factor of 2 (95% confidence interval). Measurement uncertainty has not been factored into reported values.
Blank results indicate the compound was below the limit of detection.




Gary Brook - Laboratory Director - 3/17/2021

Reporting Limits will vary based on sample extraction weight used for the analysis.

The results of this report are based solely on the sample submitted and cannot be reproduced. Decision Rule: Measurement uncertainty is not accounted for in the reported values.

Results are based solely on calculated numbers. Altitude Consulting makes no Statements of conformity. **Pesticide, metal, and microbial analyses are subcontracted to ISO 17025 laboratories.**